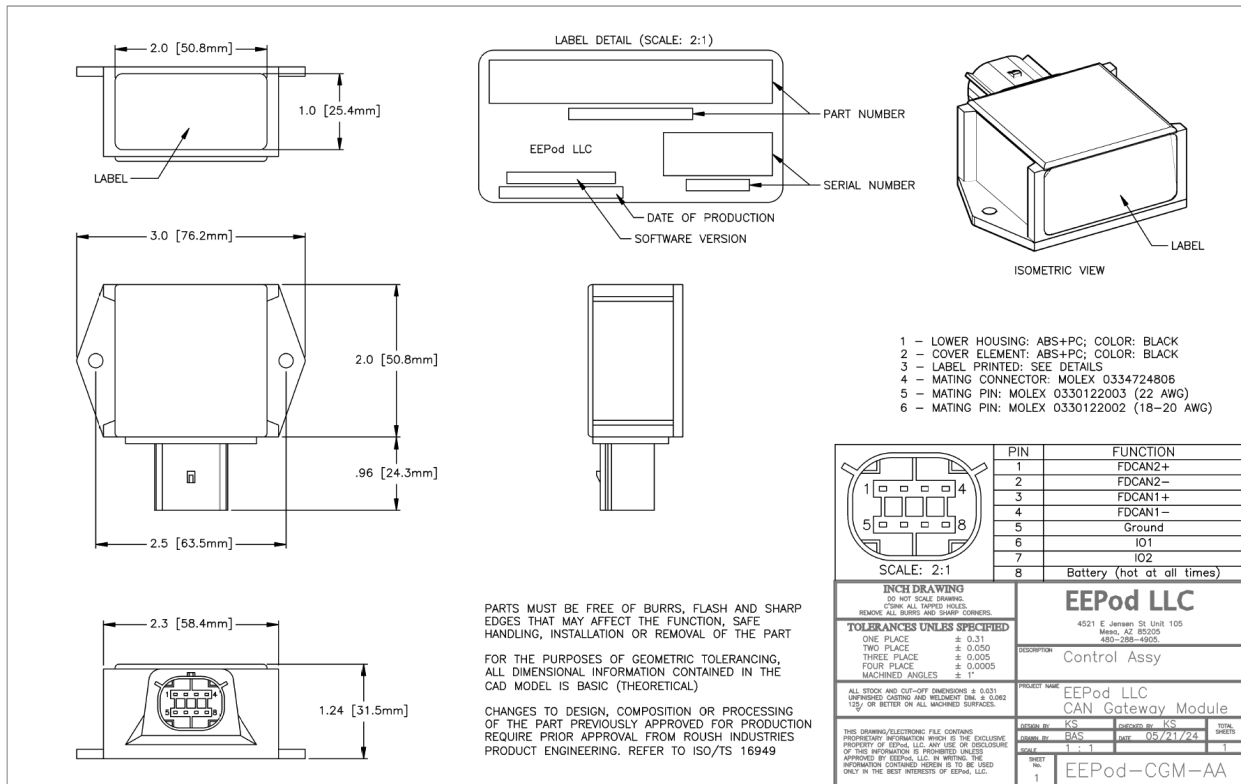


CGM Product Spotlight #4

January 2, 2025

We are starting off 2025 by highlighting our capability to produce durable, compact, powerful and inexpensive ECU solutions. Our current CGM (CAN Gateway Module) ECU is a good example of what is possible. This small ECU (approx. 2"x2"x1.25") weighs less than 3 ounces with the electronics completely potted in top-of-the-line polymer that protects from moisture, oil and vibration with a -40C to +105C operating range. Internally, it combines the power of a 32-bit high speed (300MHz) microprocessor with two CAN-FD channels, two analog channels, AES128 encryption, floating point support and the capability to reprogram over CAN.



CAN Gateway Module (CGM)

The CGM has a number of uses, but the typical use is to bridge between two different CAN networks. Some examples are the following:

- 1.) Bridge diagnostic messages between a CAN-FD powertrain network and the CAN2.0b OBDII/J1962 connector on custom or low-volume vehicles that use an OEM powertrain.
- 2.) Translate messages/signals between two different CAN protocols when testing new electrical architectures on current model vehicles.
- 3.) Convert messages between two CAN networks that operate at different speeds (i.e. different bit rates).

If you have the need for an ECU like our current CGM module or something completely custom, give us a call and we can respond quickly to get you up and running!